

# SHANTUI

## DH13-M

Crawler Dozer



Engine Model: FIAT N45  
Gross Power: 125kW(167hp)  
Operating Weight: XL:14,390kg (31,725LB.)  
LGP:14,990kg(33,047LB.)

Linde Hydrostatic Travel Drive  
electronic control

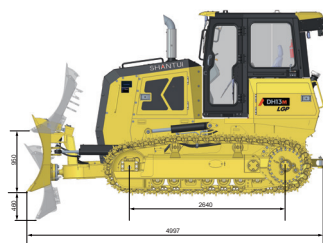
# DH13-M SPECIFICATIONS

ENGINE	
Engine	FIAT N45
Emission	EPA Tier 4 Final / EU Stage IV
Rated revolution	2200rpm
Gross power	125kW(167hp)
Net power	114kW(152hp)
Number of cylinder-bore × stroke	4-104mm×132mm
Displacement	4.5L(275cu.in)
Max. torque	710Nm(524lb.-ft.)/1500rpm
Cooling system	Smart hydraulic control

DRIVE SYSTEM	
Drive system	Independent dual-circuit electric control hydrostatic drive, intelligent matching of speed-load
System overflow pressure	42500 KPa(6162.5 psi)
Traveling speed	Forward 0~10km/h(5.6mph)
	Backward 0~10km/h(5.6mph)
Max. theoretical traction force	212kN(47690lb.)
Steering	Independent drive of track at both sides to ensure the full power output for pivot steering and steering with load
Brake	Regular closed multi-disk brake
Final drive	Primary spur gear + primary planetary reduction

CHASSIS SYSTEM	XL	LGP
Type	Rigid type suspension	Rigid type suspension
Track shoe type	Single grouser	Single grouser
Track gauge	1930mm(76in.)	2150mm(79in.)
Width of track shoe	560mm(22in.)	760mm(30in.)
Track grounding length	2640mm(104in.)	2640mm(104in.)
Track grounding area	29568cm <sup>2</sup> (4583sq.in.)	40128cm <sup>2</sup> (6220sq.in.)
Number of track shoe	40 pcs/single side	40 pcs/single side
Grounding pressure (standard configuration)	46.3kPa(6.71psi)	35.6kPa(5.16psi)
Number of carrier roller	2 pcs/single side	2 pcs/single side
Number of track roller	7 pcs/single side	7 pcs/single side
Pitch	190mm(7.48in.)	190mm(7.48in.)
Minimum turning radius	3468 mm(137 in.)	3543 mm(139 in.)

REFILL CAPACITY	
Fuel capacity	251L(66.3gal.)
Coolant liquid capacity	29 L(7.7 gal.)
Engine oil capacity	14 L(3.7 gal.)
Hydraulic oil tank	66 L(17.4 gal.)
Final drive	19L(5.2gal.)/Single side
DEF capacity	43L(11.4 gal.)



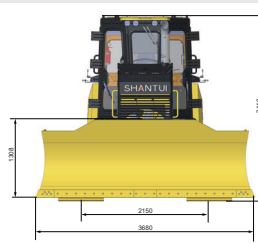
OPERATING WEIGHT	XL	LGP
With Cabin+ draw bar	14390kg(31725 lb.)	14990kg(33047 lb.)
Cabin+ ripper	15490kg(34150 lb.)	16090kg(35472 lb.)
Cabin+ winch	15690kg(34590 lb.)	16290kg(35913 lb.)

BLADE	XL	LGP
Blade type	PAT	PAT/Foldable PAT
Blade capacity	3.0cu.m(3.9cu.yd.)	3.36cu.m(4.4cu.yd.)

DIMENSION	XL	LGP
Machine height (without ROPS)	3110 mm(122 in.)	3110 mm(122 in.)
Track grouser height	50 mm(2 in.)	50 mm(2 in.)
Ground clearance	360 mm(14 in.)	360 mm(14 in.)
Machine length (with draw bar)	6280 mm(247in.)	6280 mm(247in.)
Machine length (without draw bar)	4997 mm(197in.)	4997 mm(197 in.)
Max. lifting height of blade	950 mm(37 in.)	950 mm(37 in.)
Max. digging depth of blade	460 mm(18 in.)	460 mm(18 in.)
Digging angle of blade	55°±3°(deg.)	55°±3°(deg.)
Blade width	3300 mm(130 in.)	3680 mm(145 in.)
Blade height	1305 mm(51 in.)	1305 mm(51 in.)
Max blade turning angle on ground	25°(deg.)	25°(deg.)
Machine length when blade in max turning angle	2989 mm(118 in.)	3334 mm(131 in.)
Max tilt height of blade	498 mm(19.6 in.)	560 mm(22.1 in.)
Vertical distance from left track shoe outside to blade outside when blade in max turning angle	44 mm(1.73 in.)	6.5 mm(0.25 in.)
Track shoes outside width	2490 mm(98 in.)	2910 mm(115 in.)
Vertical distance from right track shoe outside to blade outside when blade in max turning angle	455 mm(17.9 in.)	417 mm(16.4 in.)

RIPPER (THREE-SHANK RIPPER :1035KG(2282LB.))		
Max. ripping depth	500mm(20in.)	500mm(20in.)
Max. lifting height	600mm (23.6in.)	600mm (23.6in.)
Ripper length (at deepest ripping)	1530mm(60in.)	1530mm(60in.)
Ripper width	1230mm(48in.)	1230mm(48in.)
Departure angle (at highest lifting)	1759mm(69in.)	1759mm(69in.)
Tilt angle(at highest point)	43°(deg.)	43°(deg.)
Ripping width	1696mm(66.7in.)	1696mm(66.7in.)
Distance between ripper teeth	800 mm(31.5 in.)	800 mm(31.5 in.)

WINCH (HYDRAULIC WINCH (HSCT): 998KG(2200LB.))		
Diameter of steel rope	16mm(0.63in.)/19mm(0.75in.)/22mm(0.87in.)	
Maximum rope capacity of drum	128.9m(422ft.11in.)/90.8m(297ft.11in.)/65.5m(214ft.11in.)	
Maximum tension(Bare drum)	28190 kg(62148 lb)	
Maximum tension(Full drum)	15190 kg(33488 lb)	
Maximum speed of the rope(Bare drum)	13.6m/min (73 ft.2in./min)	
Length of winch	780mm(31in.)	



\* THE SPECIFICATIONS ARE SUBJECT TO CHANGE WITHOUT NOTICE. THE PICTURES MAY INCLUDE OPTIONS. THE ACTUAL COLOR & APPEARANCE OF THE PRODUCT MAY DIFFER FROM WHAT IS SHOWN.

## SHANTUI CONSTRUCTION MACHINERY CO., LTD.

ADD: No. 58, G327 Highway Jining City, Shandong, CHINA  
 TEL: +86-537-2909369  
 FAX: +86-537-2311219  
 EMAIL: trade@shantui.com  
 WEB: www.shantui.com

**SHANTUI**  
 LET'S MAKE CONSTRUCTION EASIER