

SHANTUI

DH16-M

Crawler Dozer



Engine Model: FIAT N67
Gross Power: 151kW(205hp)
Operating Weight: XL:17,635kg
LGP:18,800kg

Linde Hydrostatic Travel Drive
electronic control

DH16-M SPECIFICATIONS

ENGINE

Engine	FIAT N67
Emission	EU Stage V
Rated revolution	2100rpm
Gross power	151 kW(205hp)
Net power	149kW(202hp)
Number of cylinder-bore × stroke	6-104mm-132mm
Displacement	6.7L
Max. torque	940Nm(693lb.-ft.)/1500rpm
Cooling system	Smart hydraulic control

DRIVE SYSTEM

Drive system	Independent dual-circuit electric control hydrostatic drive, intelligent matching of speed-load	
System overflow pressure	43500 KPa	
Traveling speed	Forward	0-10km/h
	Backward	0-10km/h
Max. theoretical traction force	230kN	
Steering	Independent drive of track at both sides to ensure the full power output for pivot steering and steering with load	
Brake	Regular closed multi-disk brake	
Final drive	Primary spur gear + primary planetary reduction	

CHASSIS SYSTEM

	XL	LGP
Type	Rigid type suspension	Rigid type suspension
Track shoe type	Single grouser	Single grouser
Track gauge	2040 mm	2350 mm
Width of track shoe	560 mm/610mm	810 mm
Track grounding length	3075mm	3075mm
Track grounding area	34440/37515cm ²	49815cm ²
Number of track shoe	43 pcs/single side	43 pcs/single side
Grounding pressure (standard configuration)	50kPa/45.9kPa	36.9kPa
Number of carrier roller	2 pcs/single side	2 pcs/single side
Number of track roller	8 pcs/single side	8 pcs/single side
Pitch	203mm	203mm
Minimum turning radius	3879mm	4012mm

REFILL CAPACITY

Fuel capacity	389 L
Coolant liquid capacity	29 L
Engine oil capacity	20 L
Hydraulic oil tank	165 L
Final drive	31L/single side
DEF capacity	43L

BLADE

	XL	LGP
Blade type	PAT	PAT
Blade capacity	3.5cu.m	4.15cu.m

OPERATING WEIGHT

	XL	LGP
Cabin+ draw bar	17665kg	18830kg
Cabin+ ripper	19190kg	20375kg
Cabin+ winch	19740kg	-

DIMENSION

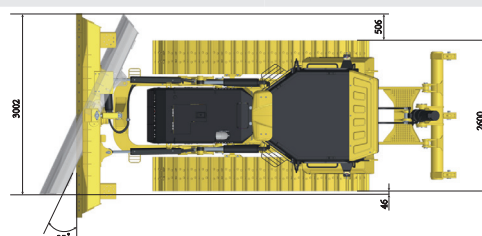
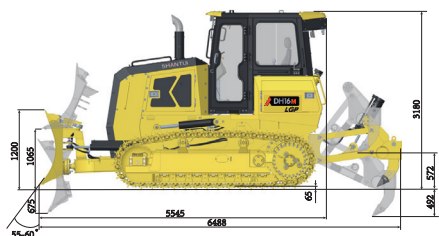
	XL	LGP
Machine height (without ROPS)	3180mm	3180mm
Track grouser height	65 mm	65 mm
Ground clearance	370 mm	370 mm
Machine length (with draw bar)	5800mm	5800mm
Machine length (without draw bar)	5545mm	5545mm
Max. lifting height of blade	1065mm	1065mm
Max. digging depth of blade	675mm	675mm
Digging angle of blade	55°-60°(deg.)	55°-60°(deg.)
Blade width	3400 mm	4011 mm
Blade height	1200 mm	1195 mm
Max blade turning angle on ground	25°(deg.)	25°(deg.)
Machine length when blade in max turning angle	3002mm	3644mm
Max tilt height of blade	448mm	528mm
Vertical distance from left track shoe outside to blade outside when blade in max turning angle	46 mm	21 mm
Track shoes outside width	2600mm	3160mm
Vertical distance from right track shoe outside to blade outside when blade in max turning angle	506mm	482mm

RIPPER (THREE-SHANK RIPPER :1493kg)

Max. ripping depth	572mm	572mm
Max. lifting height	492mm	492mm
Ripper length (at deepest ripping)	1785mm	1785mm
Ripper width	1298mm	1298mm
Departure angle (at highest lifting)	2082mm	2082mm
Tilt angle(at highest point)	43°(deg.)	43°(deg.)
Ripping width	1900 mm	1900 mm
Distance between ripper teeth	950mm	950mm

WINCH (HYDRAULIC WINCH (H6H): 2138kg)

Diameter of steel rope	22/25mm
Maximum rope capacity of drum	91/70m
Maximum tension(Bare drum)	40733kg
Maximum tension(Full drum)	23420kg
Maximum speed of the rope(Bare drum)	18m/min
Length of winch	1439mm(



* THE SPECIFICATIONS ARE SUBJECT TO CHANGE WITHOUT NOTICE. THE PICTURES MAY INCLUDE OPTIONS. THE ACTUAL COLOR & APPEARANCE OF THE PRODUCT MAY DIFFER FROM WHAT IS SHOWN.

SHANTUI CONSTRUCTION MACHINERY CO., LTD.

ADD: No. 58, G327 Highway Jining City, Shandong, CHINA
 TEL: +86-537-2909369
 FAX: +86-537-2311219
 EMAIL: trade@shantui.com
 WEB: www.shantui.com

SHANTUI
 LET'S MAKE CONSTRUCTION EASIER