

SHANTUI

DH24-M

Crawler Dozer



Engine Model: CUMMINS QSL9 EURO STAGE V
Gross Power: 212(285)/2100 KW/RPM
Operating Weight: XL: 24,000KG

Linde Hydrostatic Travel Drive
electronically controlled

DH24-M SPECIFICATIONS

ENGINE	
Engine	CUMMINS QSL9
Emission	EU Stage V
Rated revolution	2000rpm
Gross power	213kW(286hp)
Net power	190kW(255hp)
Max. torque	1636N.m(1207lb.-ft.)/1100rpm
Displacement	8.9L

DRIVE SYSTEM		
Drive system	Independent dual-circuit electric control hydrostatic drive, intelligent matching of speed-load	
System overflow pressure	46500 kPa	
Traveling speed	Forward	0~11km/h
	Backward	0~11km/h
Max. theoretical traction force	368kN	
Steering	Independent drive of track at both sides to ensure the full power output for pivot steering and steering with load	
Brake	Regular closed multi-disk brake	
Final drive	Primary spur gear + primary planetary reduction	

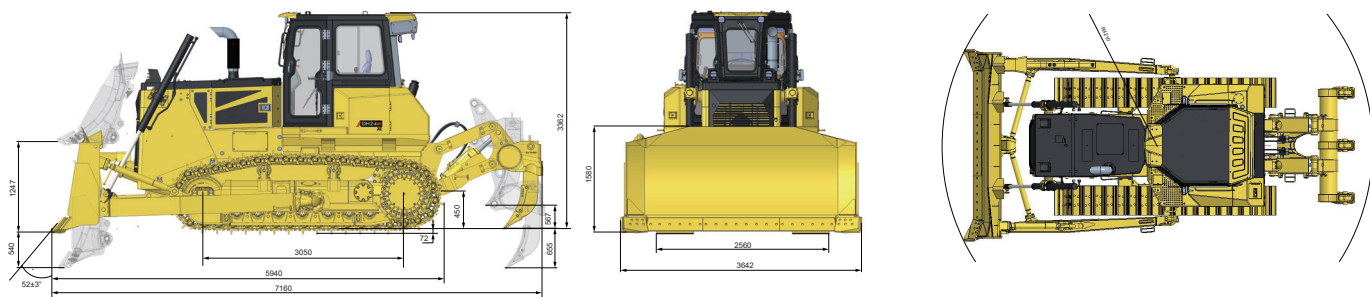
CHASSIS SYSTEM	XL	LGP
Type	Pivot+balance beam; Semi-rigid type suspension	
Track shoe type	Single grouser	Wetland / Single grouser
Track gauge	2000mm	2250mm
Width of track shoe	560mm	910mm
Track grounding length	3050mm	3482mm
Track grounding area	34160cm ²	63372cm ²
Number of track shoe	41pcs/single side	45pcs/single side
Grounding pressure (standard configuration)	67kPa	40.5kPa
Number of carrier roller	2pcs/single side	2pcs/single side
Number of track roller	7pcs/single side	8pcs/single side
Pitch	216MM	216MM
Min. turning radius	4210mm	4319mm

OPERATING WEIGHT	XL	LGP
Operating weight (Traction frame)	23562kg	24823kg
Operating weight (Ripper)	26209kg	—

BLADE	XL	LGP
Blade type	Semi-U blade	Straight-tilt blade
Blade capacity	6.5 m ³	6.4 m ³

DIMENSION	XL	LGP
Machine height	3362mm	3362mm
Track grouser height	72mm	123mm
Ground clearance	450mm	450 mm
Machine length (with ripper)	7160mm	7160mm
Machine length (with draw bar)	5940mm	6097mm
Max. lifting height of blade	1247mm	1300mm
Max. digging depth of blade	540mm	550mm
Digging angle of blade	52°±3°(deg.)	55°±3°
Blade width	3642mm	4365mm
Blade height	1580mm	1400mm
Blade tilt height	840mm	680mm
Track length on ground	3050mm	3482mm
Track shoes outside width	2560mm	3160mm

RIPPER	
Type	Three-shank ripper
Weight	2646.4kg
Max. ripping depth	655mm
Max. lifting height	567mm
Ripper length (at deepest ripping)	1882mm
Ripper length (at highest ripping)	1547mm
Ripper width	2246mm
Departure angle (at highest lifting)	16.35°
Ripping width	2000mm
Distance between ripper teeth	1000mm



* THE SPECIFICATIONS ARE SUBJECT TO CHANGE WITHOUT NOTICE. THE PICTURES MAY INCLUDE OPTIONS. THE ACTUAL COLOR & APPEARANCE OF THE PRODUCT MAY DIFFER FROM WHAT IS SHOWN.

SHANTUI CONSTRUCTION MACHINERY CO., LTD.
 ADD: No. 58, G327 Highway Jining City, Shandong, CHINA
 TEL: +86-537-2909369
 FAX: +86-537-2311219
 EMAIL: trade@shantui.com
 WEB: www.shantui.com

SHANTUI
 LET'S MAKE CONSTRUCTION EASIER