

SHANTUI

DH36-M

Crawler Dozer



Engine Model: CUMMINS QSX 12
Gross Power: 298kW(480hp)
Operating Weight: 39,000kg

Linde Hydrostatic Travel Drive
electronic control

DH36-M SPECIFICATIONS

ENGINE

Model	Cummins QSX 12
Rated speed	2100rpm
Gross power	298kW(480hp)
Net power	268kW(359hp)
Emission	U.S. EPA T4F, EU Stage V
Displacement	11.8L
Max. torque	1969N.m/1400rpm
Cooling system	Smart hydraulic control

DRIVE SYSTEM

Drive system	Independent dual-circuit electric control hydrostatic drive, intelligent matching of speed-load
System overflow pressure	420 bar
Travel speed, F	0~11km/h(6.8mph)
Travel speed, R	0~11km/h(6.8mph)
Max. theoretical traction force	543kN
Steering	Independent drive of track at both sides to ensure the full power output for pivot steering and steering with load
Brake	Regular closed multi-disk brake
Final drive	Primary spur gear + primary planetary reduction

UNDERCARRIAGE

Type	Pivot+balance beam semi-rigid suspension structure
Track shoe type	Single grouser
Track gauge	2140mm
Width of track shoe	560/660/710mm
Track grounding length	3275mm
Track grounding area	43230cm ²
Number of track shoe	40
Grounding pressure (standard configuration)	114kPa
Number of carrier roller	2pcs/single side
Number of track roller	7pcs/single side
Pitch	228.6mm

REFILL CAPACITY

Fuel tank	600L
Urea tank capacity	63.8L
Coolant liquid capacity	29L
Engine oil	34.1L
Hydraulic oil tank	215L
Final drive	35L/single side

OPERATING WEIGHT

With ripper	42000kg
Without ripper	39000kg

BLADE

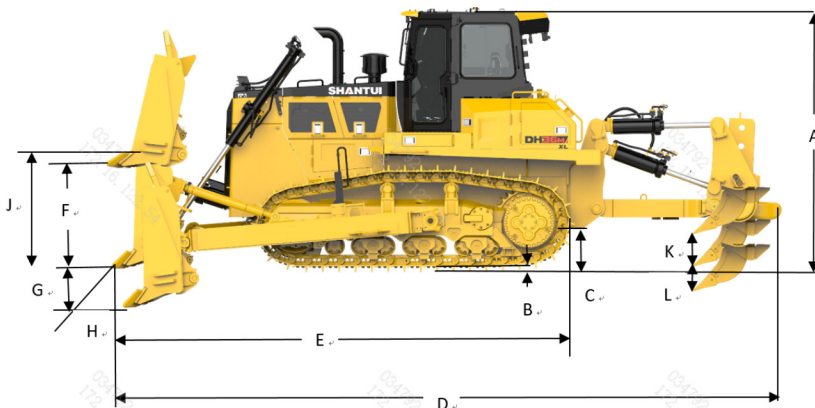
Blade type	Semi-U
Blade capacity	10.5 m ³

DIMENSION

A Machine height	3635mm
B Track grouser height	80mm
C Ground clearance	587mm
D Machine length (with ripper)	9300mm
E Machine length (without ripper)	6395mm
F Max. lifting height of blade	1375mm
G Max. digging depth of blade	560mm
H Digging angle of blade	52°
I Blade width	4130mm
J Blade height	2000mm

RIPPER

Type	Single ripper
L Max. ripping depth	1250mm
K Max. lifting height	973mm



* THE SPECIFICATIONS ARE SUBJECT TO CHANGE WITHOUT NOTICE. THE PICTURES MAY INCLUDE OPTIONS. THE ACTUAL COLOR & APPEARANCE OF THE PRODUCT MAY DIFFER FROM WHAT IS SHOWN.

SHANTUI CONSTRUCTION MACHINERY CO., LTD.

ADD: No. 58, G327 Highway Jining City, Shandong, CHINA
 TEL: +86-537-2909369
 FAX: +86-537-2311219
 EMAIL: trade@shantui.com
 WEB: www.shantui.com

SHANTUI
 LET'S MAKE CONSTRUCTION EASIER