

# SHANTUI

# DH46-M

Crawler Dozer



Engine Model: Cummins X15-C525 U.S. EPA Tier 4 Final, EU Stage V  
Gross Power: 392kW(525hp)@1800rpm  
Operating Weight: RS:56200kg(123899LB.)

Linde Hydrostatic Travel Drive  
electronic control

# DH46-M SPECIFICATIONS

## ENGINE

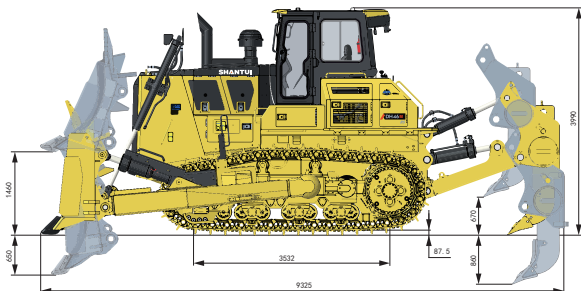
Engine	Cummins X15-C525
Emission	U.S. EPA Tier 4 Final, EU Stage V
Rated revolution	1800rpm
Gross power	392kW(525hp)
No. of cylinder-bore×stroke	6×137mm×169mm(6×5.40in.x6.65in.)
Displacement	15L
Max. torque	2373Nm(1750.2lbf·ft)@1400rpm
Cooling system	Smart temperature-controlled fan

## DRIVE SYSTEM

Drive system	Independent dual-circuit electric control hydrostatic drive, intelligent matching of speed-load, "stepless" variable speed, mono-lever control of travel, speed and steering; steering with load, pivot steering, work flexibly, high efficiency, easy for maintenance	
System overflow pressure	43500kPa(6309.1psi)	
Traveling speed	Forward	0~11km/h(6.8mph)
	Backward	0~11km/h(6.8mph)
Steering	Independent drive of track at both sides to ensure the full power output for pivot steering and steering with load	
Brake	Regular closed multi-disk brake	
Final drive	Double-reduction final drives of spur gear and planetary gear	

## CHASSIS SYSTEM RS

Type	Pivot, equalizing beam suspended type, semi-rigid structure
Track shoe type	Single grouser
Track gauge	2260mm(89in.)
Width of track shoe	610mmx660mmx710mm(24in.x26in.x28in.)
Track grounding length	3532mm(139in.)
Track grounding area	21545cm <sup>2</sup> (3339.5sq.in.)
Number of track shoe	40 pcs/side
Grounding pressure (standard configuration)	120kPa(17.4psi)
Number of carrier roller	2 pcs/side
Number of track roller	7 pcs/side
Pitch	260mm(10.2in.)



## REFILL CAPACITY

Fuel capacity	880L(232.5GAL.)
Coolant liquid capacity	73L(19.3GAL.)
Engine oil capacity	45-49L(11.9-12.9GAL.)
Hydraulic oil tank (travel)	240L(63.4GAL.)
Hydraulic oil tank (work)	43L(11.4GAL.)/SINGLE SIDE
Final drive	8L(2.1gal.)
Transfer case	6L(1.6GAL.)

## OPERATING WEIGHT RS

Operating weight	56200kg(123899lb.)
------------------	--------------------

## BLADE RS

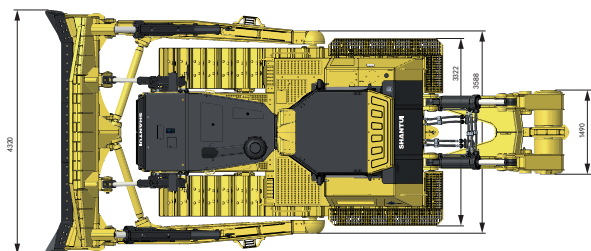
Blade type	Rock Blade
Blade capacity	13.7cu.m(17.9cu.yd.)

## DIMENSION RS

Machine height	3990mm(157in.)
Track grouser height	87mm(3.4in.)
Ground clearance	680mm(26.8in.)
Machine length (with ripper)	9325mm(367in.)
Machine length (without ripper)	7085mm(275in.)
Max. lifting height of blade	1460mm(57.5in.)
Max. digging depth of blade	660mm(26in.)
Digging angle of blade	53°±3°(deg.)
Blade width	4320mm(179in.)
Blade height	1950mm(76.8in.)
Blade tilt height	1140mm(44.9in.)
Width from end of left track shoe to end of right track shoe	2870mm(113in.) (standard)
Width from end of left footplate to end of right footplate	3322mm(130.8in.) (standard)

## RIPPER

Type	Single Shank ripper
Ripping Depth of Ripper	1245mm(49in.)
Lifting Height of Ripper	860mm(33.9in.)
Length of Ripper(Maximum Subsoiling Position)	2475mm(108in.)
Width of Ripper	1490mm(58.7in.)
Tilt Angle(Maximum Lift Position)	37.5°



\* THE SPECIFICATIONS ARE SUBJECT TO CHANGE WITHOUT NOTICE. THE PICTURES MAY INCLUDE OPTIONS. THE ACTUAL COLOR & APPEARANCE OF THE PRODUCT MAY DIFFER FROM WHAT IS SHOWN.

## SHANTUI CONSTRUCTION MACHINERY CO., LTD.

ADD: No. 58, G327 Highway Jining City, Shandong, CHINA  
 TEL: +86-537-2909369  
 FAX: +86-537-2311219  
 EMAIL: trade@shantui.com  
 WEB: www.shantui.com

**SHANTUI**  
 LET'S MAKE CONSTRUCTION EASIER